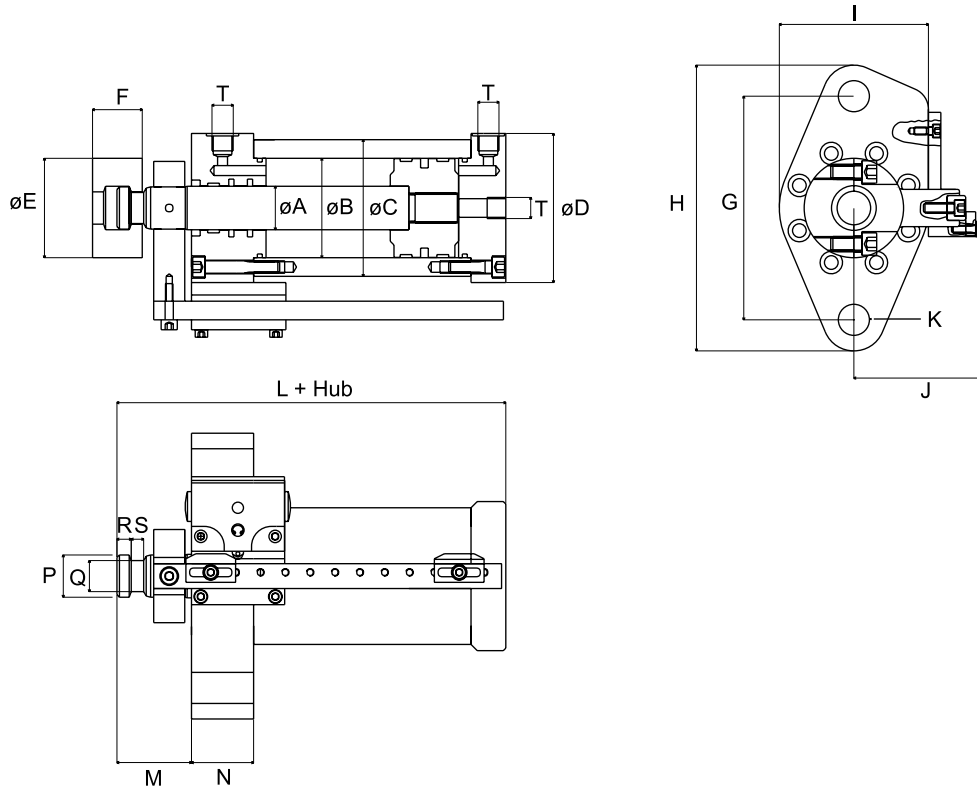


## Kernzugzylinder K1 - K15



| Benennung              | K1     | K2     | K3     | K5     | K8     | K10    | K15    | K25    |
|------------------------|--------|--------|--------|--------|--------|--------|--------|--------|
| A Stangendurchmesser   | 28     | 35     | 35     | 40     | 50     | 65     | 65     | 75     |
| B Kolbendurchmesser    | 50     | 70     | 80     | 100    | 125    | 145    | 175    | 220    |
| C Zylinderaussenø      | 80     | 100    | 110    | 130    | 155    | 190    | 230    | 290    |
| D Deckelø              | 90     | 110    | 120    | 140    | 165    | 205    | 235    | 280    |
| E Kupplungø            | 80     | 80     | 80     | 90     | 100    | 110    | 110    | 120    |
| F Kupplung-L           | 40     | 40     | 40     | 45     | 50     | 60     | 60     | 100    |
| G Lochabstand          | 150    | 150    | 180    | 210    | 250    | 280    | 310    | 350    |
| H Fussplatte-H         | 200    | 200    | 230    | 260    | 310    | 350    | 400    | 460    |
| I Fussplatte-B         | 90     | 110    | 120    | 140    | 165    | 205    | 235    | 280    |
| J Mitte - Schaltplatte | 80     | 100    | 105    | 120    | 140    | 155    | 170    | 190    |
| K Aufspannbohrung-ø    | 25     | 25     | 25     | 25     | 30     | 35     | 45     | 55     |
| L Länge + Hub          | 205    | 205    | 215    | 220    | 230    | 230    | 300    | 330    |
| M Kolbenstange         | 60     | 60     | 60     | 78     | 82     | 92     | 92     | 125    |
| N Fussplatte           | 40     | 40     | 50     | 55     | 65     | 65     | 90     | 120    |
| P Kolbenstangeø = D    | 27     | 34     | 34     | 39     | 49     | 63     | 63     | 75     |
| Q Kolbenstangenø = d   | 20     | 25     | 25     | 30     | 40     | 50     | 50     | 60     |
| R Länge                | 12     | 11,5   | 11,5   | 15     | 17     | 20     | 20     | 40     |
| S Einstch              | 10     | 10     | 10     | 13     | 18     | 20     | 23     | 28     |
| T Anschlussgewinde     | G 3/8" | G 3/8" | G 3/8" | G 3/8" | G 1/2" | G 1/2" | G 3/4" | G 3/4" |